

---

---

# Chapter 1

## Introduction of the Motherboard

### 1-1 Feature of Motherboard

- NVidia MCP7A-ION chipset.
- Onboard Atom CPU, with low power consumption never denies high performance.
- Support FSB 533 MHz.
- Support DDRII DIMM 667/800 up to 8GB.
- Onboard Realtek RTL 8111DL Gigabit Ethernet LAN.
- Integrated ALC 888 6-channel HD audio codec
- Support USB2.0 data transport demands.
- DV Power onboard, 12V input (NC63P series only).
- Integrated NVIDIA ION Graphics, supports DX10, full HD 1080p, Blu-ray/HD-DVD playback

#### **Caution!**

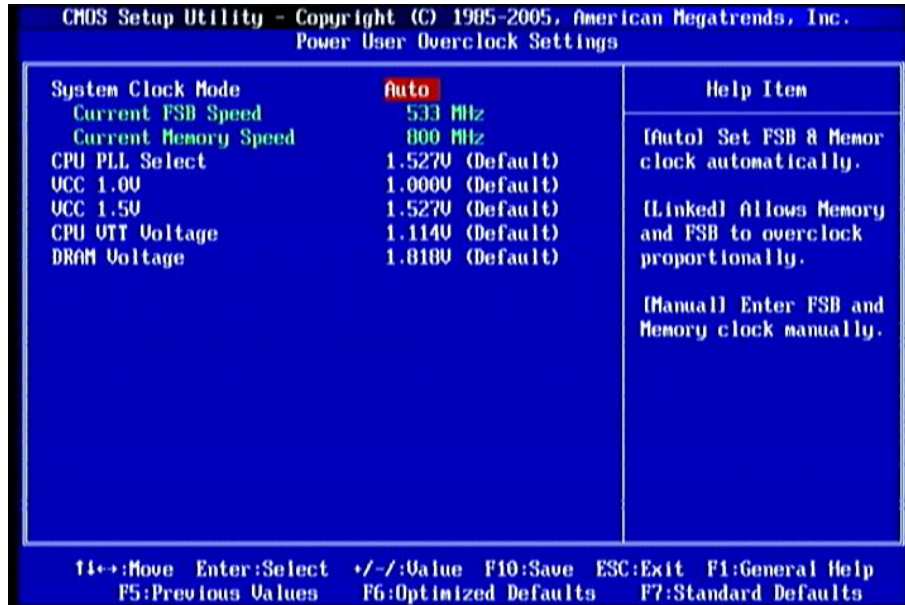
Please observe the following notice!

NC63P comes with a build-in DC-DC converter. To avoid high temperature, please **DO NOT** overload the maximum power of the external power supply while the system is consuming high voltage. **Be aware of the maximum temperature allowance of the power supply.**

---

---

## 3-12 Power User Overclock Settings



### System Clock Mode

The optional settings are: Auto; Manual. When set as Manual, user can set FSB frequency depend on CPU ranged from 533 to 800 (MHz) and sets memory frequency from 667 to 1066(MHz).

### CPU PLL Select

The setting ranges from 1.527v(Default) to 2.530v.

### VCC 1.0V

The setting ranges from 1.000v(Default) to 1.992v.

### VCC1.5V

The setting ranges from 1.527v(Default) to 3.031v

### CPU VTT Voltage

The setting ranges from 1.114v(Default) to 2.210v.

### DRAM Voltage