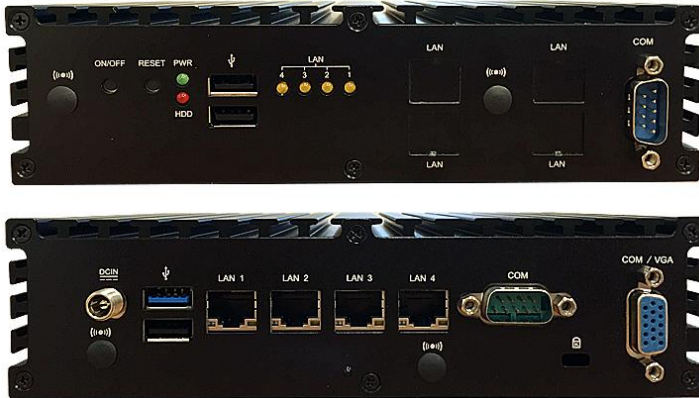


JBC375F533

Fanless Embedded Network Appliance Celeron J1900 / 4GB DDR3L / 4 Intel LAN



Features

- Bay Trail Fanless Embedded Networking System
- Planned Product Lifecycle Through Q1'2021
- Intel Celeron J1900 2.0GHz SoC Quad-Core 10W
- 4GB DDR3L-1333 Onboard Memory
- 4 * Intel Gigabit LAN, 1 * 2.5" SATA2 Drive Bay
- 1 * Full-size mSATA/mini-PCIE Shared Slot
- 2 * Full-size Mini-PCIE Slots, SIM Card Socket
- 2 * Serial Ports, VGA, 12V DC-in Locking Barrel Jack
- Includes Wall Mount and Din Rail Mounting Kits

Model No.	■ JBC375F533
Part No	■ HBJC375F533W-19B4 (WIFI), HBJC375F533-19B4 (non-WIFI)
Processor	■ Intel Celeron J1900 SoC Quad-core 2.0GHz processor, 2.42GHz Burst, 10W TDP
Memory	■ 4GB DDR3L-1333 onboard, non-expandable
Expansion Slots	■ 2 * Full-size Mini-PCIE slots (One occupied on WIFI model)
Storage	■ 1 * 2.5" SATA2 Drive bay (max 9.5mm height) ■ 1 * Full-size mSATA/Mini-PCIE shared slot
Network	■ 4 * Intel i211-AT gigabit LAN
Other Features	■ ACPI S3, AHCI, Watchdog Timer 10-255 min/sec,
Rear Panel I/O	■ 1 * USB 3.0 port, 1 * USB 2.0 port, VGA port, 4 * RJ45, Antenna holes, 12V DC In locking jack, Kensington lock hole
Front Panel I/O	■ Power button, Reset button, Power & HDD LED, LAN LEDs, 2 * USB 2.0 ports, 1 * Serial port, Antenna holes, 4 LAN Expansion punchouts (supports 2 * ADMPEIDLA)
BIOS	■ AMI 64MB SMT Flash ROM
Box Contents	■ 60W 12V AC Adapter, US Power Cord, Manual, Driver disk, Wall/Din rail mount kit, Din Rail Clips (antenna on WIFI model) (VESA Optional)
Compliance	■ CE, FCC, RoHS, ErP Ready
Temperature	■ Operating Temperature 0~40 ° C, Storage Temperature -20-85 ° C
Dimensions	■ 185 x 142 x 48mm (DxWxH)
Warranty	■ 1 Year limited warranty

*Specifications subject to change without notice, not responsible for typographical errors.



Jetway Computer Corporation
Phone: 510-857-0130 Fax: 510-857-0138
8058 Central Ave., Newark, CA 94560
www.jetwaycomputer.com