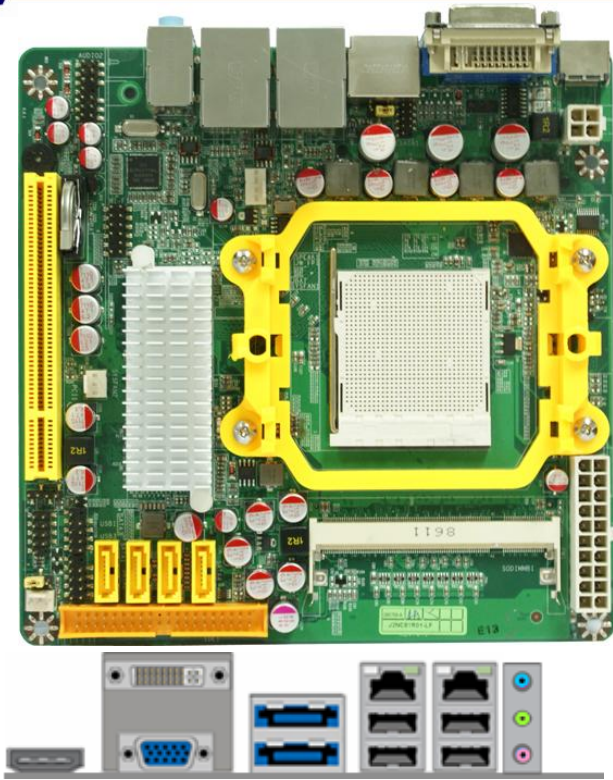


## Mainboard Diagram

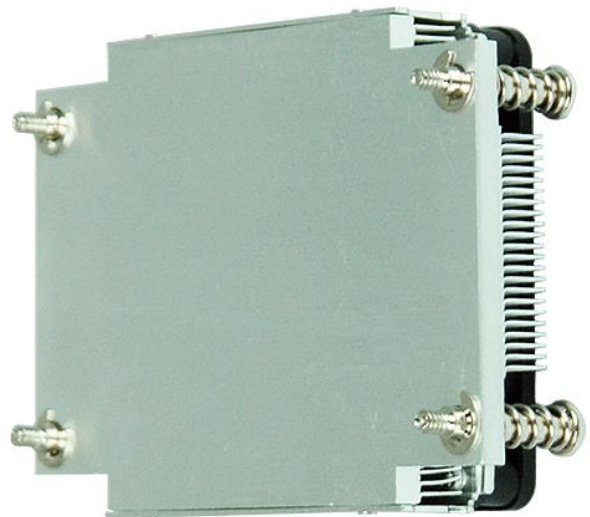
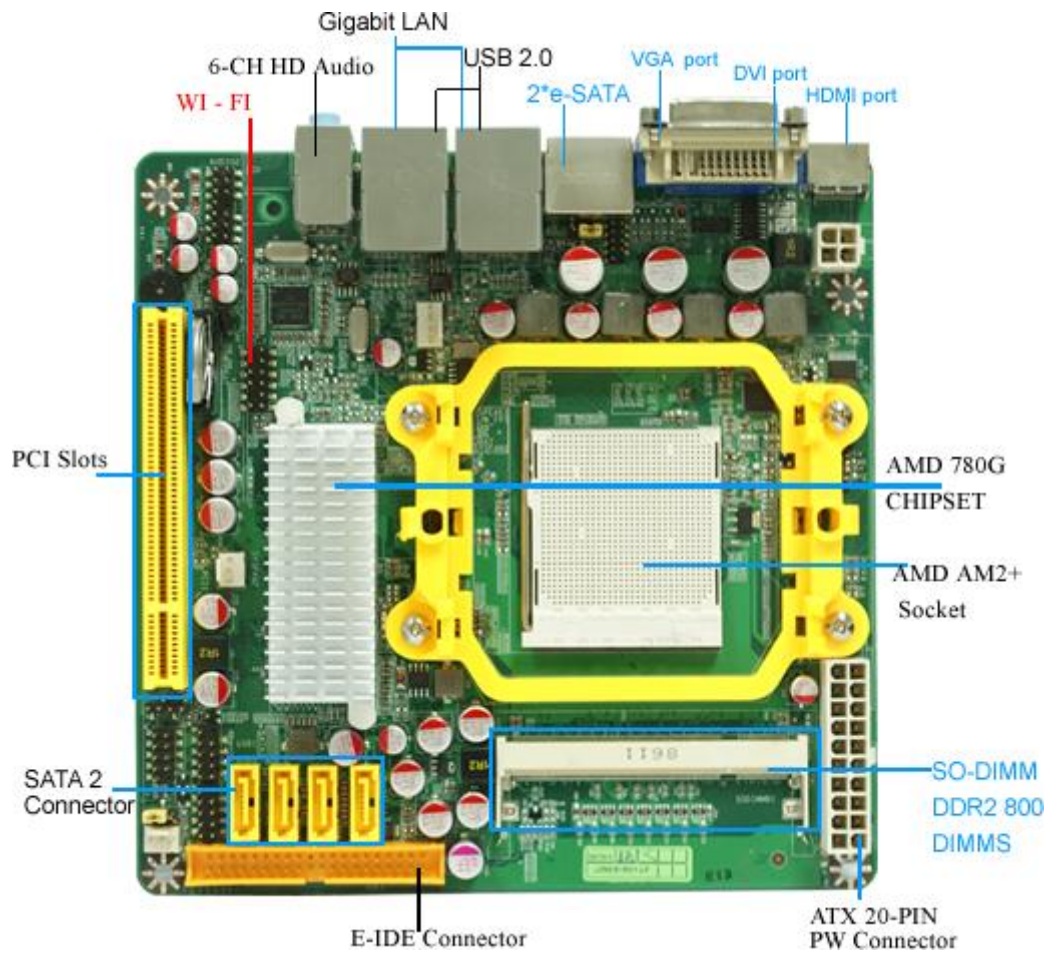


## NC81-LF

1. AMD 780G Chipset + SB700 Chipset
2. Support Socket AM2+ Quad core Opteron™ & Phenom™
3. Integrated ATI HD 3200 Chipset
4. Advanced 3+1 PWM Design
5. Solid Polymer, long life capacitors
6. Support 4 Serial ATA2 Devices with RAID 0,1,10
7. Support 1080i and 1080p and HDCP
8. Support Microsoft DirectX 10
9. Support h.264, VC1 and Mpeg-2 video decode
10. Support Blu-ray DVD/HD DVD playback
11. Support DVI/HDMI Output
12. Support Wi-Fi Connector
13. Supports 2 X Gigabit LAN
14. Integrated ALC883 HD Audio CODEC with 6.0 CH
15. ITX Form Factor(17cm x 17cm)

## Mainboard Specifications

■ CPU	<ul style="list-style-type: none"> <li>■ Socket AM2 HT 3.0 AMD® Opteron™ With Hyper Transport Technology</li> <li>■ Compatible with 64-bit Dual Core AMD® Athlon™64 X2 Processors</li> </ul>
■ Chipset	<ul style="list-style-type: none"> <li>■ AMD 780G Chipset + SB700 Chipset</li> </ul>
■ Memory	<ul style="list-style-type: none"> <li>■ 2 * SODIMM Sockets for un-buffered Dual Channel DDR2 800 SDRAM up to 4 GB</li> </ul>
■ Expansion Slots	<ul style="list-style-type: none"> <li>■ 1 * 32-bit PCI slot</li> </ul>
■ Storage	<p><b>Embedded SB700 Chipset</b></p> <ul style="list-style-type: none"> <li>■ 4 * Serial ATA2 3Gb/s connectors</li> <li>■ Supports HDDs with RAID 0, 1,10 functions</li> <li>■ 1 * Ultra DMA 133 / 100 / 66 IDE connector</li> </ul>
■ Audio	<ul style="list-style-type: none"> <li>■ Realtek ALC662 6-Channel HD Audio CODEC w SPIF in and out</li> </ul>
■ Ethernet LAN	<ul style="list-style-type: none"> <li>■ Realtek RTL8111C PCI LAN chip for Gigabit Ethernet LAN</li> <li>■ Realtek RTL8111C PCI-E LAN chip for Gigabit Ethernet LAN</li> </ul>
■ USB	<ul style="list-style-type: none"> <li>■ Embedded 8 * USB 2.0/1.1</li> </ul>
■ Special Features	<ul style="list-style-type: none"> <li>■ Advanced Power Design that supports the latest Socket-AM2+ CPU</li> <li>■ "IMAGE IT!" System Backup Software and "ProMagicPLUS!" System Recovery System</li> </ul>
■ Rear Panel I / O	<ul style="list-style-type: none"> <li>■ 4 * USB 2.0/1.1 ports</li> <li>■ 2 * RJ-45 ports &amp; 2 * e-SATA ports</li> <li>■ 1 * Audio I / O ports</li> <li>■ 1 * VGA port</li> <li>■ 1 * DVI port</li> <li>■ 1 * HDMI port</li> </ul>
■ Internal I / O	<ul style="list-style-type: none"> <li>■ 2 * USB 2.0/1.1 headers for 4 USB 2.0 ports</li> <li>■ CPU / Chassis Fan connectors;</li> <li>■ 1 * 4-pin ATX 12V Power connector and 1 * 20-pin ATX Power connector</li> <li>■ 1 * COM header &amp; 1 * Serial Port header &amp; 1 *12-PIN Wi-Fi header</li> </ul>
■ BIOS	<ul style="list-style-type: none"> <li>■ Award 8MB SPI Flash ROM</li> </ul>
■ Form Factor	<ul style="list-style-type: none"> <li>■ Mini ITX Form Factor(17cmx17cm), 4 Layers for PCB</li> </ul>



## Specifications

<b>CPU Socket Compatible</b>	AMD 940 and AM2
<b>Fan Speed</b>	4000+10% R.P.M(1Ball & 1Sleeve)
<b>Voltage</b>	DC 12V
<b>Noise</b>	<36 dBA
<b>Weight</b>	Depending on the actual commodity
<b>Volume</b>	(106) x (72) x (25)mm