
Chapter 1

Introduction of the Motherboard

1-1 Feature of Motherboard

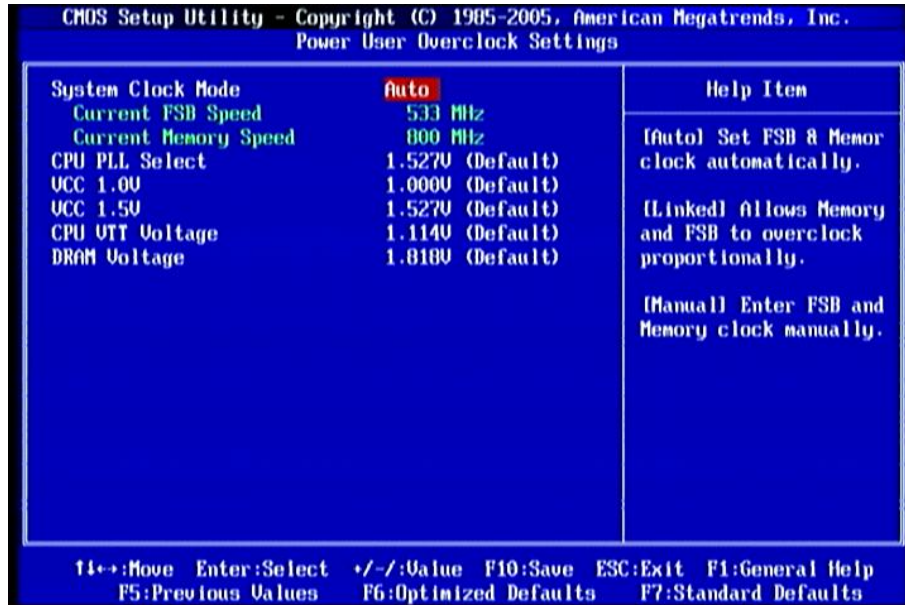
- NVidia MCP7A-ION chipset.
- Onboard Atom CPU, with low power consumption never denies high performance.
- Support FSB 533 MHz.
- Support DDRII DIMM 667/800 up to 8GB.
- Onboard Realtek RTL 8111DL Gigabit Ethernet LAN.
- Integrated ALC 888 6-channel HD audio codec
- Support USB2.0 data transport demands.
- DV Power onboard, 12V input (NC63P series only).
- Integrated NVIDIA ION Graphics, supports DX10, full HD 1080p, Blu-ray/HD-DVD playback

Caution!

Please observe the following notice!

NC63P comes with a build-in DC-DC converter. To avoid high temperature, please **DO NOT** overload the maximum power of the external power supply while the system is consuming high voltage. **Be aware of the maximum temperature allowance of the power supply.**

3-12 Power User Overclock Settings



System Clock Mode

The optional settings are: Auto; Manual. When set as Manual, user can set FSB frequency depend on CPU ranged from 533 to 800 (MHz) and sets memory frequency from 667 to 1066(MHz).

CPU PLL Select

The setting ranges from 1.527v(Default) to 2.530v.

VCC 1.0V

The setting ranges from 1.000v(Default) to 1.992v.

VCC1.5V

The setting ranges from 1.527v(Default) to 3.031v

CPU VTT Voltage

The setting ranges from 1.114v(Default) to 2.210v.

DRAM Voltage