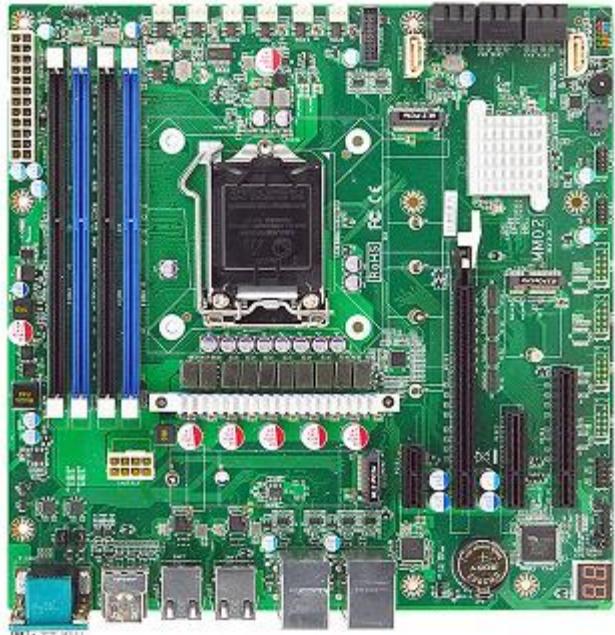


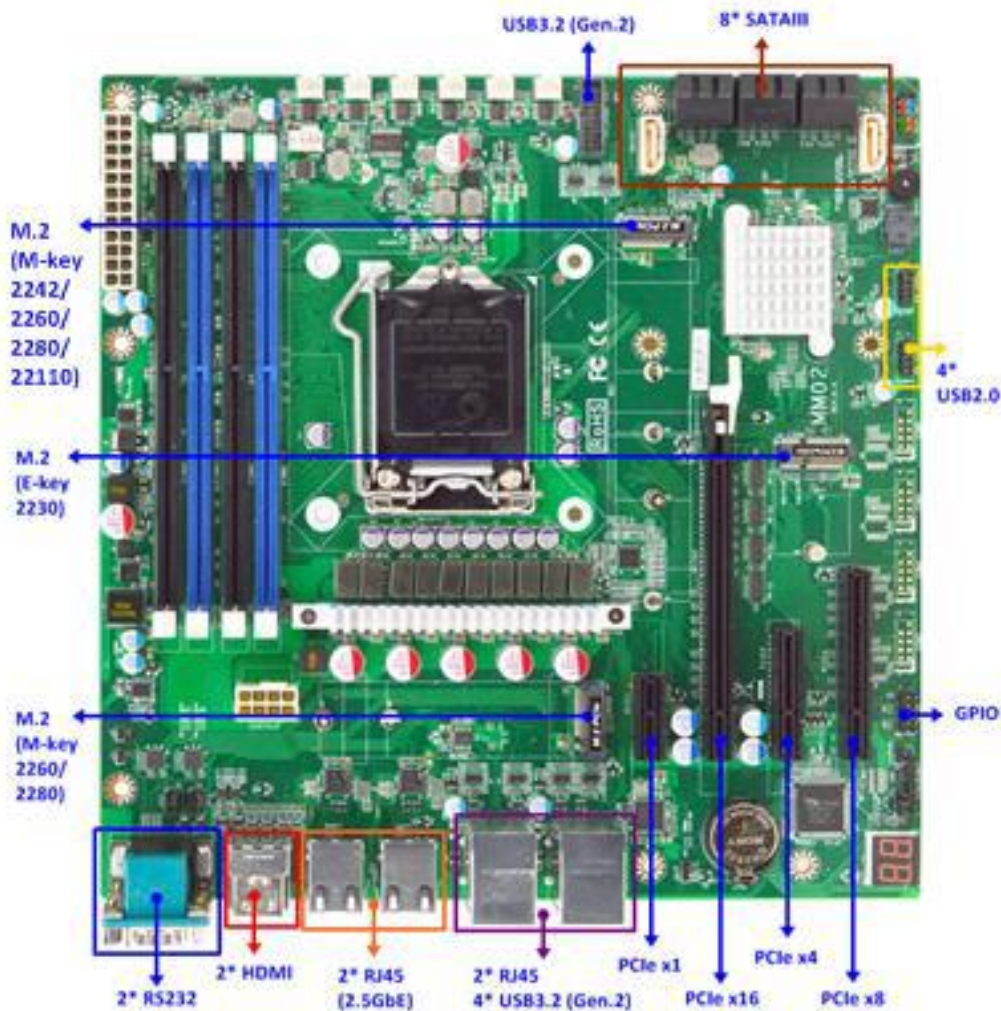
MM02-20

Micro ATX Workstation Motherboard W480E ECC Support / 2*2.5GbE+2*1GbE / USB 3.2 Gen2



Features

1. Long-Life Embedded Class Workstation Motherboard with Planned Lifecycle Through Q2'2035
2. Supports 10th Generation Intel Xeon W & Core Processors up to 95W (Comet Lake), Intel W480E Chipset
3. Supports DDR4-2933 DIMM up to 128GB Total
4. Supports ECC/Non-ECC Memory, Intel iAMT, Intel vPro
5. 8 * SATA3 6Gb/s Supporting RAID, 2 * M.2 NVME Slots
6. 2 * 2.5GbE, 2 * 1GbE, 2 * HDMI, 2 * RS232
7. PCIe x16, PCIe x8, PCIe x4, PCIe x1
8. 6 * USB 3.2 Gen2 Ports (10Gb/s), 4 * USB 2.0 Ports
9. Watchdog Timer, Optional TPM
10. Compatible with Windows 10, Windows Server, UEFI Linux
11. Micro ATX Form Factor (244mm x 244mm)



Model / Series	MM02
Part No	MM02-20 (W480E) MM02-22 (W480E, TPM 2.0)
Processor	Socket LGA1200, Supports 10 th Gen Intel Xeon W & Core processors up to 95W, Comet Lake
Chipset	Intel W480E Chipset
Video	Intel graphics in processor
Memory	4* 288-pin DIMM slots supporting dual channel DDR4-2933 up to 128GB total
Expansion Slots	PCI Express x16, PCI Express x8, PCI Express x4, PCI Express x1 M.2 E-key 2230 for WIFI (CNVI)
Storage	8 * SATA3 6Gb/s ports supporting RAID 0, 1, 5, 10, JBOD M.2 M-Key SATA & PCIE 3.0 x4 NVME 2242/2260/2280/22110 M.2 M-Key SATA & PCIE 3.0 x2 NVME 2260/2280
Audio	Intel HD Audio via HDMI
Network	2 * Intel i225-LM 2.5GbE LAN, 1 * Intel i219-LM 1GbE LAN, 1 * Intel i210-AT 1GbE LAN
Other Features	Support ACPI S3, CPU Smart FAN, Watchdog Timer 10-255 min/sec, Optional onboard TPM
Rear Panel I/O	4 * USB 3.2 Gen2 ports (10Gb/s) 4* RJ-45 Ports 2 * Serial RS232 ports 2 * HDMI (4K@30Hz)
Internal I/O	1* 20-pin USB Header for 2 * USB 3.2 Gen2 ports (10Gb/s) 2* USB Headers for 4 * USB 2.0 ports 1 * PS/2 combo connector, SMBUS header, Debug LED 8-bit GPIO, Chassis Intrusion Header, AT/ATX mode jumper 24-pin ATX and 8-pin 12V_ATX Power connectors
BIOS	AMI UEFI Flash ROM
Box Contents	MM02 Motherboard, I/O Shield
Certification	CE, FCC, RoHS, ErP
Temperature	Operating Temperature 0~60 ° C, Storage Temperature -20-85 ° C
Form Factor	Micro ATX Form Factor (244mm x 244mm)
Warranty	2 Years Limited Warranty

*Specifications subject to change without notice, not responsible for typographical errors.



Jetway Computer Corporation
Phone: 510-857-0130 Fax: 510-857-0138
8058 Central Ave., Newark, CA 94560
www.jetwaycomputer.com

