

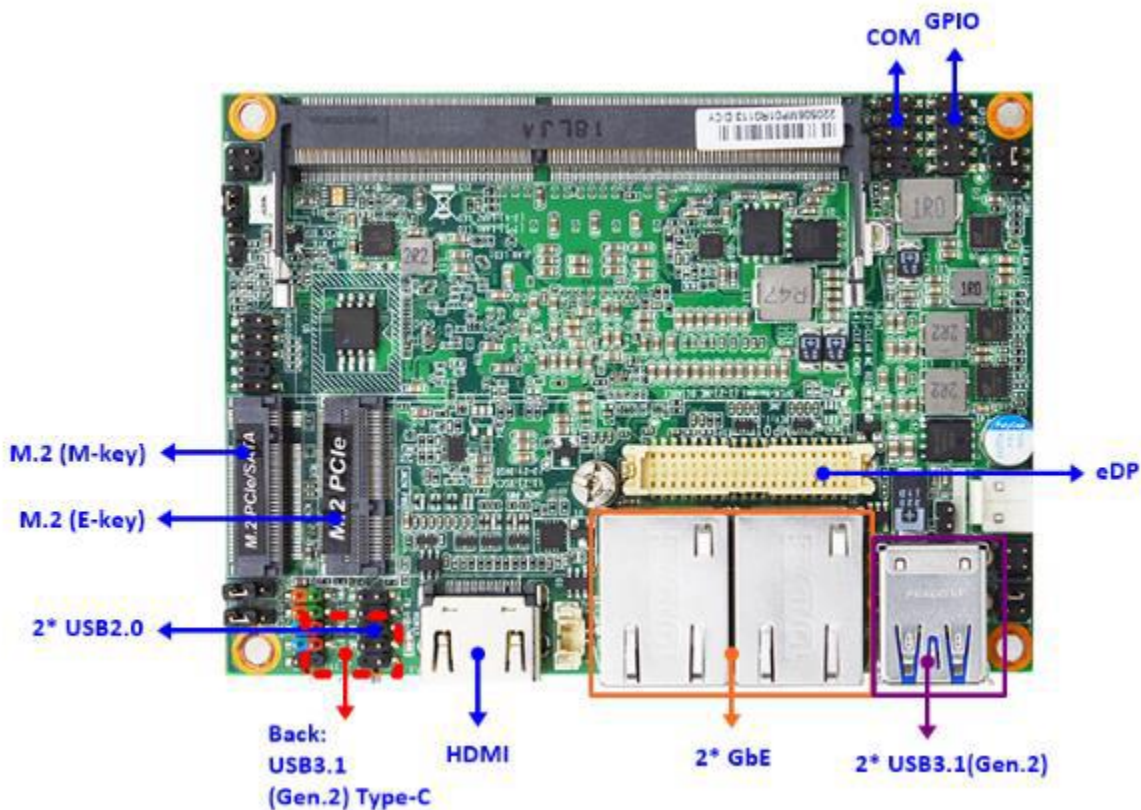
# MP01

## Pico-ITX Industrial Motherboard N6210 Dual-Core / 2 LAN / HDMI+eDP / 12V-INT



### Features

1. Industrial Embedded Motherboard with Planned Lifecycle Through Q1'2036
2. Intel Celeron N6210 Dual-Core, Elkhart Lake Platform
3. 1 \* DDR4-3200 slots supporting up to 32GB Total
4. 2 \* Realtek Gigabit LAN
5. Up to 2 Displays, HDMI + eDP, HD Audio
6. M.2 SATA/PCIE 3.0 x2 NVME 2242, M.2 for WIFI
7. 3 \* USB 3.2 Gen2, 2 \* USB 2.0, 8bit GPIO
8. 1 \* Serial Header, Watchdog Timer, AT/ATX Power Mode
9. 2-pin 12V Internal Power Connector
10. Compatible with Windows 10/11 64bit, UEFI Linux
11. Pico-ITX Form Factor (100mm x 72mm)



<b>Model / Series</b>	<ul style="list-style-type: none"> <li>■ MP01</li> </ul>
<b>Part No</b>	<ul style="list-style-type: none"> <li>■ MP01-62100</li> <li>■ MP01-62103 (32GB EMMC)</li> </ul>
<b>Processor</b>	<ul style="list-style-type: none"> <li>■ Intel Celeron N6210 Dual-Core, Elkhart Lake Platform</li> <li>■ * Ships with flat aluminum heatsink for direct attaching to a surface</li> </ul>
<b>Chipset</b>	<ul style="list-style-type: none"> <li>■ SoC</li> </ul>
<b>Video</b>	<ul style="list-style-type: none"> <li>■ Intel HD Graphics</li> </ul>
<b>Memory</b>	<ul style="list-style-type: none"> <li>■ 1 * 260-pin SO-DIMM slot supporting DDR4-3200 up to 8GB total</li> </ul>
<b>Expansion Slots</b>	<ul style="list-style-type: none"> <li>■ M.2 E-key 2230 (USB/PCIE)</li> </ul>
<b>Storage</b>	<ul style="list-style-type: none"> <li>■ M.2 M-key SATA/PCIE 3.0 x2 NVME 2242</li> <li>■ Optional EMMC</li> </ul>
<b>Audio</b>	<ul style="list-style-type: none"> <li>■ HD Audio</li> </ul>
<b>Network</b>	<ul style="list-style-type: none"> <li>■ 2 * Realtek RTL8119I Gigabit LAN</li> </ul>
<b>Other Features</b>	<ul style="list-style-type: none"> <li>■ Support AHCI, ACPI S3, CPU Smart FAN, Watchdog Timer 10-255 min/sec.</li> </ul>
<b>Rear Panel I/O</b>	<ul style="list-style-type: none"> <li>■ 2 * USB 3.2 Gen2 ports Type-A</li> <li>■ 1 * USB 3.2 Gen2 ports Type-C</li> <li>■ 2 * RJ-45 LAN ports</li> <li>■ HDMI 2.0b 4K @60Hz</li> </ul>
<b>Internal I/O</b>	<ul style="list-style-type: none"> <li>■ 1 * USB header for 2 * USB 2.0 ports, eDP 4K @60Hz</li> <li>■ 8bit GPIO, SMBus, AT/ATX power switch mode</li> <li>■ 2-pin 12V internal power connector</li> </ul>
<b>BIOS</b>	<ul style="list-style-type: none"> <li>■ AMI Flash ROM</li> </ul>
<b>Box Contents</b>	<ul style="list-style-type: none"> <li>■ MP01 Motherboard</li> </ul>
<b>Certification</b>	<ul style="list-style-type: none"> <li>■ CE, FCC, RoHS, ErP/EuP, REACH</li> </ul>
<b>Temperature</b>	<ul style="list-style-type: none"> <li>■ Operating Temperature -0~60 ° C</li> <li>■ Storage Temperature -20-85 ° C</li> </ul>
<b>Form Factor</b>	<ul style="list-style-type: none"> <li>■ Pico-ITX Form Factor (100mm x 72mm)</li> </ul>
<b>Warranty</b>	<ul style="list-style-type: none"> <li>■ 2 Years Limited Warranty</li> </ul>

\*Specifications subject to change without notice, not responsible for typographical errors. Overclocking not supported.



**Jetway Computer Corporation**  
**Phone: 510-857-0130 Fax: 510-857-0138**  
**8058 Central Ave., Newark, CA 94560**  
**[www.jetwaycomputer.com](http://www.jetwaycomputer.com)**

