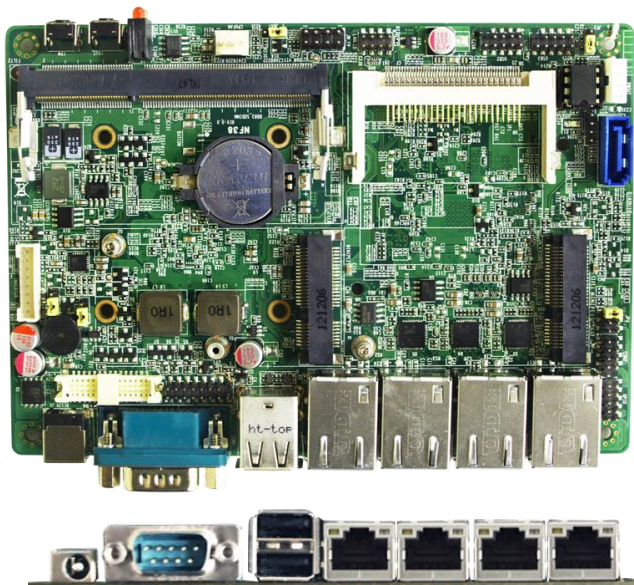


# NF38QLB-525

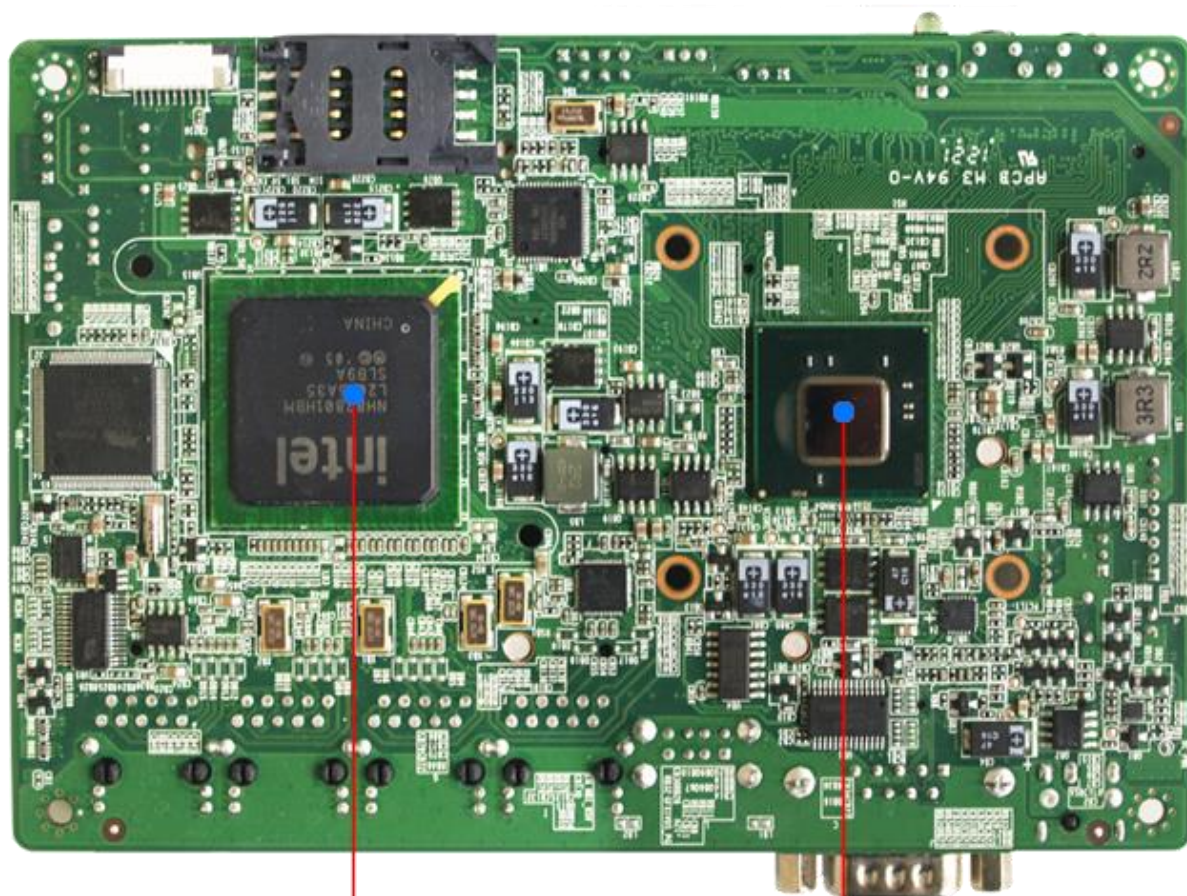
3.5" SBC for Fanless Network Appliance  
4 Gigabit LAN / COM / 2 mini-PCIE / mSATA



## Features

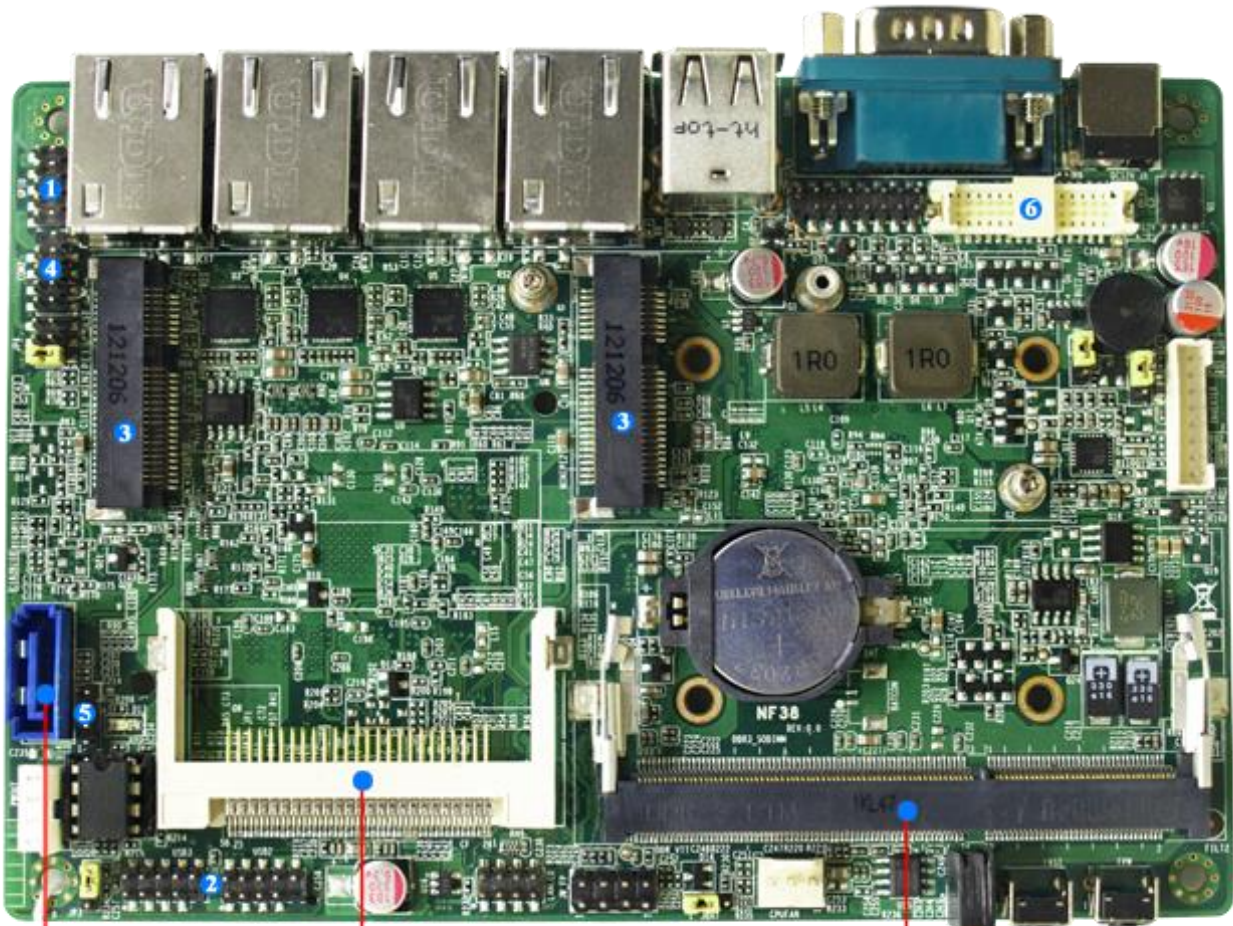
1. Embedded Long-life Design for Custom Network Appliance
2. Intel Atom D525 1.8GHz Dual-Core Processor, ICH8M Chipset
3. 4 \* Realtek PCI Express Gigabit Ethernet Controllers
4. CompactFlash Slot supporting CF and CF-SATA Cards
5. 1 \* SATA2 3Gb/s Ports, SIM Card Socket
6. 2 \* PCI Express Mini Card Slots (One shared mSATA/mini-PCIE)
7. Supports 1 \* DDR3-800 SO-DIMM up to 2GB
8. Internal VGA Header and 18-bit Single Channel LVDS
9. Watchdog Timer, 8-bit GPIO, Console Port
10. Onboard 12V DC Power
11. 3.5" SBC Form Factor (148mm x 102mm)

**Note: Designed for OEM projects, does not include heatsink or thermal solution**



INTEL® ICH8M Express chipset

INTEL® Pine Trail-D Processor D525



CF card reader socket  
(can support both CF card & CF SATA card)

1 \* DDR3 667/800MHz Single CH  
SO-DIMM up to 2GB

1 \* Serial ATAII 3Gb/s connector

- ❶ 1 \* GPIO header
- ❷ 2 \* USB 2.0 headers for 4 \* USB 2.0 ports
- ❸ 2 \* full size Mini PCI-E [1 \* mSATA socket (Share with one of Mini PCI-E socket)]
- ❹ 1 \* COM header (COM2 for RS232/422/485)
- ❺ 1 \* CIR header
- ❻ 1 \* 18-bits Single CH LVDS connector



**Front I/O card with 2 \* USB 2.0, Power & Reset button, Power & HDD LED & 4 \* NIC LEDs**



## Specifications

<b>Model No</b>	■ NF38
<b>Part No</b>	■ JNF38QLB-525
<b>CPU</b>	■ Intel Atom D525 1.8GHz Dual-Core processor
<b>Chipset</b>	■ Intel ICH8M Chipset
<b>Video</b>	■ Integrated Intel GMA 3150 graphics
<b>Memory</b>	■ 1 * 204-pin DDR3-800 SO-DIMM up to 2GB
<b>Expansion Slots</b>	■ 2 * PCI Express Mini Card full-size (one is mSATA/mini-PCIE function selectable)
<b>Storage</b>	■ 1 * SATA2 3Gb/s port, 1 * CompactFlash Slot supporting either CF or CF-SATA ■ 1 * mSATA slot (mSATA/mini-PCIE function selectable)
<b>Audio</b>	■ None
<b>Network</b>	■ 4 * Realtek RTL8111E Gigabit LAN
<b>LVDS</b>	■ 18-bit Single Channel LVDS
<b>Other Features</b>	■ Support ACPI S3, CPU Smart FAN, Watchdog Timer 10-255 min/sec
<b>Rear Panel I/O</b>	■ 4 * RJ-45 Ports, 2 * USB 2.0 Ports ■ 1 * Console Serial Port (RS232) ■ 12V DC Jack
<b>Internal I/O</b>	■ 2 * USB Headers for 4 * USB 2.0 Ports ■ 1 * Serial Header (RS232/422/485) ■ 1 * 8bit GPIO, SIM Card Socket ■ 1 * VGA header, 18-bit Single Channel LVDS & Inverter ■ 4-pin Power output connector
<b>BIOS</b>	■ AMI EFI 8MB DIP Flash ROM
<b>Box Contents</b>	■ NF38 Motherboard, SATA Cable, Power Cable, Manual, DVD Driver Disk, Front I/O Board
<b>Compliance</b>	■ CE, FCC, RoHS, ErP
<b>Temperature</b>	■ Operating Temperature 0~60 ° C, Storage Temperature -20-85 ° C
<b>Form Factor</b>	■ 3.5" SBC Form Factor (148mm x 102mm)
<b>Warranty</b>	■ 2 Years Limited Warranty

\*Specifications subject to change without notice, not responsible for typographical errors.



**Jetway Computer Corporation**  
**Phone: 510-857-0130 Fax: 510-857-0138**  
**8058 Central Ave., Newark, CA 94560**  
**[www.jetwaycomputer.com](http://www.jetwaycomputer.com)**

