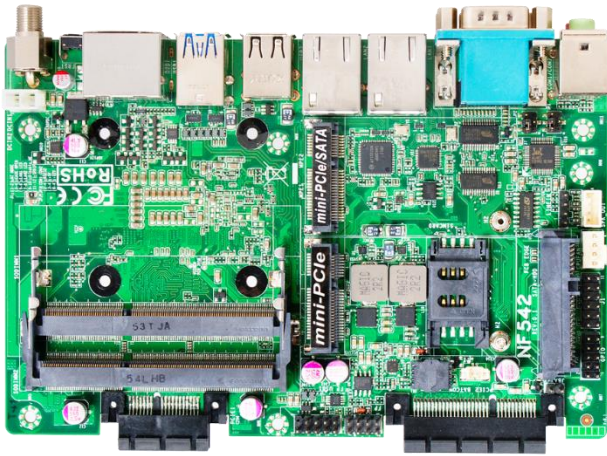


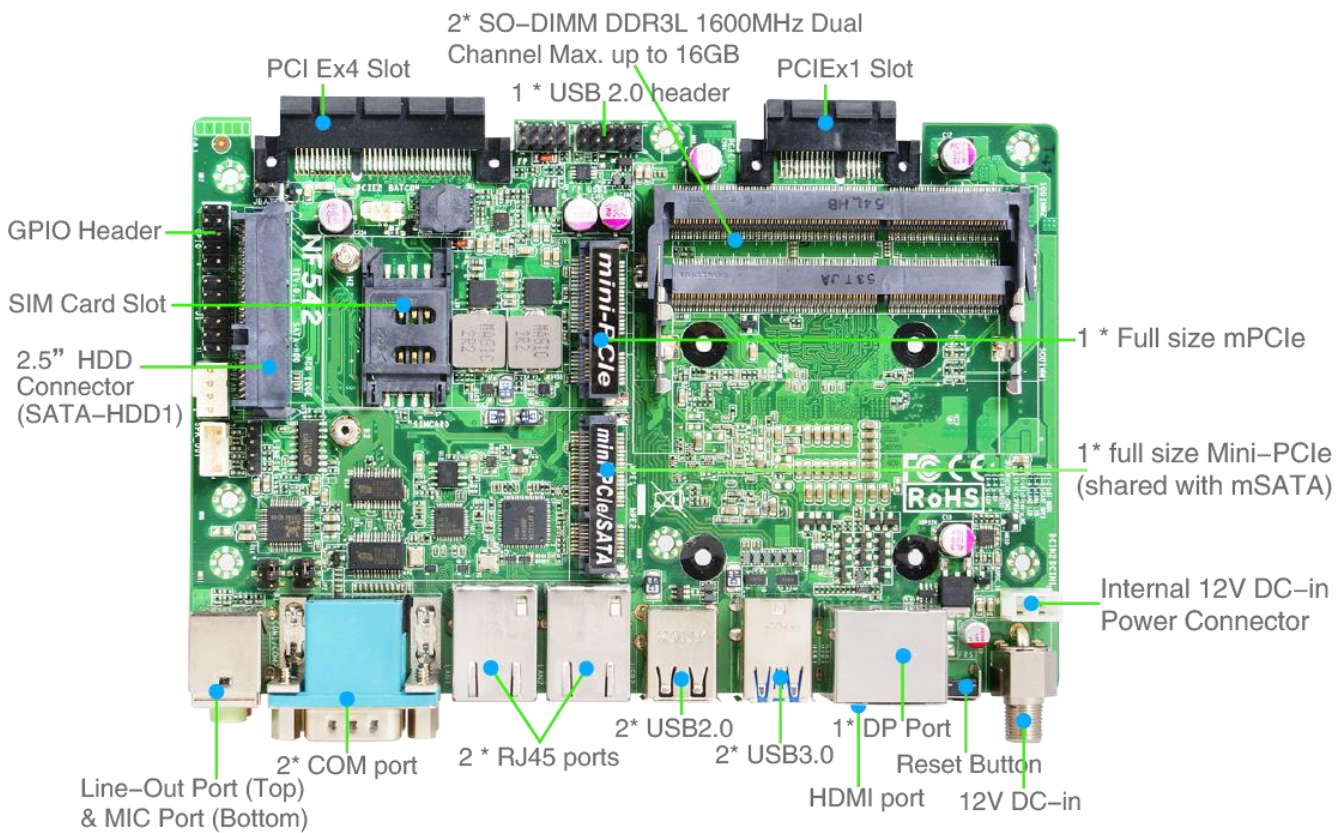
# NF542

## Proprietary Industrial Motherboard Intel i5-4300U / 2 PCIE Expansion Side Slots



### Features

1. Long-Life Embedded Class Industrial Motherboard with Planned Lifecycle Through Q4'2018
2. CPU on Bottom for Easy Integration into Fanless Systems
3. Intel Core i5-4300U SoC, 1.9GHz - 2.9GHz, Dual-Core, 15W
4. 2 \* DDR3L-1600 SODIMM Slots up to 16GB Total
5. Supports up to 2 Displays, HDMI, DisplayPort
6. 1 \* Cableless 2.5" SATA3 6Gb/s, 1 \* Full-size Mini-PCIE Slot
7. 1 \* Full-size mSATA/Mini-PCIE Shared Slot
8. 2 \* Intel Gigabit LAN, Supporting iAMT 9.5, HD Audio
9. 2 \* Serial Ports, 8-bit GPIO, Watchdog Timer
10. 2 \* USB 3.0 Ports, 2 \* USB 2.0 Ports,
11. 12V DC-In Jack or Internal 2-pin Alternate Power Connector
12. Proprietary Form Factor (167mm x 110mm)
13. Supports 2 \* GEN3 Jetway Daughter Boards



<b>Model / Series</b>	■ NF542
<b>Part No</b>	■ JNF542-4300U
<b>Processor</b>	■ Intel Core i5-4300U SoC, 1.9GHz – 2.9GHz burst, Dual-Core, 15W TDP, Haswell ULT
<b>Chipset</b>	■ SoC
<b>Video</b>	■ Intel HD Graphics 4400, 200MHz – 1,100MHz
<b>Memory</b>	■ 2 * 204-pin SO-DIMM slots supporting DDR3L-1600 up to 16GB total, 1.35V required
<b>Expansion Slots</b>	■ 1 * PCIE x1 side-port, 1 * PCIE x4 side-port ■ 1 * mini-PCI Express slot (Full-size), SIM card socket
<b>Storage</b>	■ 1 * Cableless 2.5" SATA3 6Gb/s bay ■ 1 * mSATA/mini-PCI Express shared slot (Full-size)
<b>Audio</b>	■ Realtek ALC662 HD Audio, L+R 3W/40hm Amplifier Header
<b>Network</b>	■ 1 * Intel i211-AT Gigabit LAN ■ 1 * Intel i218-LM Gigabit LAN supporting iAMT 9.5 & vPro
<b>Other Features</b>	■ Support ACPI S3, AHCI, CPU Smart FAN, Watchdog Timer 10-255 min/sec
<b>Rear Panel I/O</b>	■ 2 * USB 3.0 ports, 2 * USB 2.0 ports ■ 2 * RJ-45 ports, 2 * Serial ports (RS232) ■ HDMI 1.4 (up to 3280 x 2000 @60Hz) ■ DisplayPort 1.2 (up to 3200 * 2000 @60Hz) ■ Line Out (w/ Optical SPDIF Out), Mic, Reset button ■ 12V DC-in locking jack (1-pin 2.5mm ID/5.5mm OD)
<b>Internal I/O</b>	■ 1 * USB Header for 2 * USB 2.0 ports ■ Line-in audio header, 8-bit GPIO header, SIM card socket ■ Chassis Intrusion Header, AT/ATX power switch mode jumper ■ Internal 2-pin Alternate power connector
<b>BIOS</b>	■ AMI 128MB SMT Flash ROM
<b>Box Contents</b>	■ NF542 Motherboard, Manual, DVD Driver Disk
<b>Certification</b>	■ CE, FCC, RoHS, ErP
<b>Temperature</b>	■ Operating Temperature 0~60 ° C, Storage Temperature -20-85 ° C
<b>Form Factor</b>	■ Proprietary Form Factor (167mm x 110mm)
<b>Warranty</b>	■ 2 Years Limited Warranty

\*Specifications subject to change without notice, not responsible for typographical errors.



**Jetway Computer Corporation**  
**Phone: 510-857-0130 Fax: 510-857-0138**  
**8058 Central Ave., Newark, CA 94560**  
**www.jetwaycomputer.com**

