

ADE4COMCB

4-port Serial + TPM Expansion
GEN2 Daughter Board



Dimension: 75 x 82 mm

Chipset: Fintek F81216AD

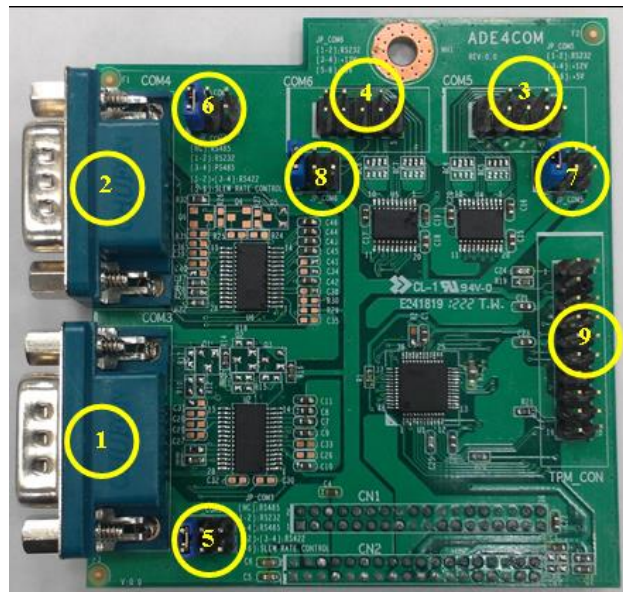
Features:

- Four high-speed 16C550 compatible UART with 16-byte FIFOs
- Fully programmable serial-interface characteristics
- Baud rate up to 115.2K
- All of RS232s support powered function (pin 9)
- 2 * RS-232 (2 external DB9), 2 * RS-232/RS-422/RS-485 headers
- COM_A, COM_B, COM_C, COM_D
- TPM 1.2 header
- Two RS-232 cables included

Compatibility: (includes I/O shields for these MB)

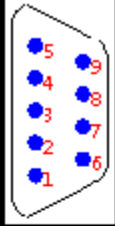
- NF9G-QM77, NF9N-2930, NF9I-2550

Pin definitions




1. COM_A

RS232



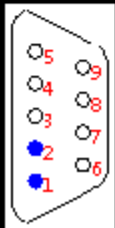
Pin No.	Pin Definition	Pin No.	Pin Definition
1	DCD#	6	DSR#
2	SIN	7	RTS#
3	SOUT	8	CTS#
4	DTR#	9	RI#
5	GND		

RS422



Pin No.	Pin Definition	Pin No.	Pin Definition
1	TX-(B)	6	NC
2	TX+(A)	7	NC
3	RX+(A)	8	NC
4	RX-(B)	9	NC
5	GND		

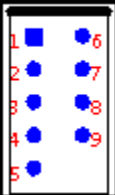
RS485



Pin No.	Pin Definition	Pin No.	Pin Definition
1	D-(B)	6	NC
2	D+(A)	7	NC
3	NC	8	NC
4	NC	9	NC
5	GND		

2. **COM_B** : Please refer to COM_A


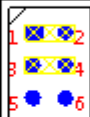
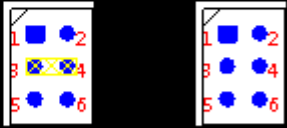
3. **COM_C** : RS232 only



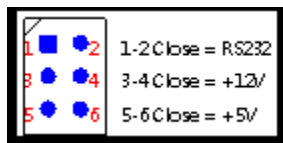
Pin No.	Pin Definition	Pin No.	Pin Definition
1	DCD#	6	DSR#
2	SIN	7	RTS#
3	SOUT	8	CTS#
4	DTR#	9	RI#/+12V/+5V
5	GND		

4. **COM_D** : RS232 only, please refer to COM_C

5. **JP_COM_A** : Select RS232/RS422/RS485

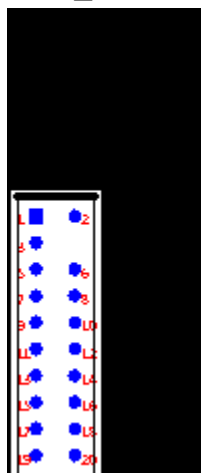
- RS232 : 1-2 close 
- RS422 : 1-2 and 3-4 close together 
- RS485 : 3-4 close or all open 
- SLEW RATE CONTROL : 5-6
Open : Maximum data rate
Close : Data rate is 250Kbps

6. **JP_COM_B** : Select RS232/RS422/RS485, please refer to JP_COM_A



1-2 Close = RS232
3-4 Close = +12V
5-6 Close = +5V

7. **TPM_CON** (Option) :



Pin No.	Pin Definition	Pin No.	Pin Definition
1	PCICLK	11	LAD0
2	GND	12	GND
3	LFRAME#	13	NC
		14	NC
5	PLTRST#	15	+3.3VSB
6	+5V	16	SERIRQ
7	LAD3	17	GND
8	LAD2	18	GND
9	+3.3V	19	GPIO0
10	LAD1	20	GPIO1

